

RiverTalk MD

**A Daytripper's Guide
to Perryville, Port Deposit,
and the
Lower Susquehanna Greenway**

- easy-to-read map
- calendar of events
- local stories
 - Pedaling the Susquehanna State Park
 - Exploring the Paw Paw Museum
 - Perryville's Community Park and Upcoming Triathlon
 - Darlington's Independence Day Celebration
- 45+ advertisers

**Spring/Summer 2003
Premiere Issue**

FREE

Smart Growth

Land Management Company

140 East Main Street Elkton, MD 21921 Phone 410-620-5906



The River Talks

Welcome to this first edition of a semi-annual publication – a partner-publication to the *Lockhouse to Lighthouse* in Havre de Grace. Why? Well, I believe the Lower Susquehanna area offers a collage of history, nature, community, shopping and eateries that enlighten the mind, soothe the soul, feed the spirit, treat the mall-shopper to a unique experience, and will always tickle the taste buds of pretty near every palate.

I am an implant to the area. This gypsy, averaging a household move every 3 years, arrived in Havre de Grace in the snowstorms of 1995-96. Being from western New York State I loved every shovels full of snow. Of course, not everyone in this area felt

quite as enthusiastic as I did.

The remarkable point of this story is that I've truly fallen in love with the area and have been here in the same apartment for more than seven years. In fact, I'm actually moving to a larger apartment just a couple blocks away as you read this publication.

My love for the area is what precipitated these projects. I enjoy the sharing of some interesting bit of information that a local resident didn't know while at the same time enticing the daytripper to walk along our shared river, hike a trail, sail-kayak-powerboat around our shorelines, and visit our shops, museums and restaurants.

Most importantly, I encourage you to chat with people. There are wonderful stories to be told of days gone by. Shopkeepers will share their dreams if you give them the opportunity.

We are truly community in our region. We may have *designated heritage areas*, but we live in those areas. They are not the past to us. Our lives revolve in and around our heritage.

Museums nestle next to new condos. Today's families live in century old homes. Visitors stay in Bed and Breakfasts that subtly offer a memory of our history – whether it is photos on the wall, or maybe the bed they are sleeping in.

The waters share the exhilaration of the powerboats, the swoosh of the wind in a sail, the quiet glide of a kayak or canoe, and the "What's that?" excitement of seeing the Skipjack MARTHA LEWIS and the paddle wheel LANTERN QUEEN. The same water gives us the ducks and geese, migrating Coots and awe-inspiring Bald Eagles, Osprey, Heron, Hawks, songbirds, turtles and fish. (We'll write more about this in future articles.)



Yes, we may be a bit slower. But isn't that why you visit? You breathe deeply, your heartbeat calms, your senses actually say, "Ahhh...". Then, just when you think nothing is happening, you find yourself attuning to a new rhythm. The eyes see with a new perspective. New sounds cause you to look up as the ducks and geese fly over. You'll even find your conversation changes as you realize that people are really listening.

RiverTalk – the Susquehanna flows from upstate New York (Cooperstown, in fact) emptying into the head of the Chesapeake Bay right here. If you sit quietly in your boat or on the shoreline, you can hear the stories she has to tell. The Susquehannock Indians, Capt. John Smith, even (truly) George Washington whisper on our waters.

The Underground Railroad – slaves and indentured running to freedom – passed through her. Listen and you'll hear their cautious movements. The builders of the canals and, later, the railroads add ripples to the tales that pass along the Susquehanna.

(Continued on page 3)



The Rendezvous
Bar & Restaurant

Catch All Your
NFL Games
Here With
The NFL
Ticket!

362 Front Street, Perryville, MD
410-642-0045
MCV/AMEX/DISC., DINER'S CLUB
MON.-SAT. 11 AM-2 AM, SUN. 9 AM-11 PM
One Block from the mouth of the Chesapeake Bay

- Steamed Crabs Year Round • Full Menu •
- Lunch & Dinner • Sunday Brunch 10 AM-2 PM •
- Live Blues Every Friday & Saturday •

www.therendezvousinn.com

*Riverside Market, Deli
And Restaurant*

**Full Restaurant, Deli, and Market,
serving Breakfast, Lunch and Dinner**

We offer anything from Catering to Carryout, Groceries to Gasoline or just come in, sit down and relax in our new dining room for a great meal.

Overstuffed Subs and Sandwiches, the "best" shrimp salad, great steaks, rotisserie chicken, Homemade Soups, Crab cakes and more!

410-642-6536

Daily Lunch and Dinner specials
Full menu available for carry-out
See Our menu in the menu Section

636 Broad Street, Perryville
Mon.-Sat. 6 am-9 pm; Sun. 6 am-6 pm





A Family Experience
Making Tomorrow's
Memories Today

Hours: April - September
11 am - 10 pm

Soft & Hand-dipped Ice Cream
Shakes, Sundaes, Shaved Ice
Try Tony's Fruitti Delight
Sandwiches, Coffee, Pie
featuring the "Box Car Dog"

Corner of
Broad & Front Sts.
Perryville

410-642-3445

Life Happens.



With a good financial partner, it happens for the best.



1-888-287-5001
www.firstnortheast.com

MEMBER FDIC
Equal Housing Lender



**The Whistle Stop
Restaurant**
PERRYVILLE, MD

The Only Themed
Restaurant in Perryville ...

*Railroad Buff? ...
You'll Definitely Want to Visit!*

Open 7 Days/Week Offering
Homestyle Cooking with Flair

- Everything home-made - desserts, soups, salads, entrées
- \$3.95 Daily Breakfast Specials
- Catering on ~ or ~ off premises
- Featuring mouth-watering entrées including fresh seafood & crabcakes

540B Pulaeki Highway
(Corner of Aiken Ave. & Rt. 40)
Perryville, MD

Call: 410-642-2470




The River Talks

(Continued from page 2)

I am excited to have you join us on these discoveries. I know there will never be enough room for all that there is to share. That's why I hope this publication encourages you to return again and again.

I'll try to give you the resources you need to make your stay fit your interests. I encourage you to check out our new websites:

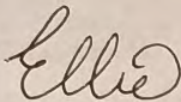
www.RiverTalkMD.com

www.LockhouseToLighthouse.com

Sign up for the newsletter that will update you on the interesting events of the coming month.

Welcome to and enjoy our communities of Perryville, Port Deposit and the Lower Susquehanna Greenway. And take the time to listen to the **RiverTalk**.

Warmly,



RiverTalkMD

Editor/Publisher
Ellie Mencer

Ad Sales
Ellie Mencer

Typesetting/Layout
SR&B Advertising

Printer
Homestead Publishing

Distribution
20,000 by
George Wagner
Ellie Mencer
Harford County Tourism
Cecil County Tourism

Need Copies?
E-mail, call or write:
Ellie Mencer
515 Bourbon St. #2
Havre de Grace, MD 21078
410-939-8424
e-mail:
ellieoops@aol.com

©2003 by Ellen Mencer.
RiverTalk MD is published
twice yearly.

All rights reserved. No part of
this publication may be reproduced
without written permission of the
editor. Every effort is made to
present accurate information.

RiverTalk MD,
or any agents involved, is not
responsible for any errors or
omissions that might occur or any
damages re-sulking from same.

Thanks ...

THANK YOU to a number of friends who have made my efforts to complete this first edition of RiverTalk MD easier. They include, but are certainly not limited to, Allen Phillippe (a tireless taxi service who enjoyed all the folks we had the opportunity to meet), Teresa Yost Bennett (my wonderful 'emergency service' when timing was of the essence), and Lachelle Beazley (another great taxi service and morale booster). There are a dozen others who kept me going when I thought I'd taken on an overwhelming task. Thanks to each of you.

I offer a special THANK YOU to the advertisers who supported this first edition and to the many that I know will sign on for future editions, to the various people and organizations that helped to guide me to the information I needed, and to the residents and tourists who enjoy the publications (Lockhouse to Lighthouse and RiverTalk).

Cover Photos:

*The beautiful back lawn of Rodgers Tavern in Perryville
A great streetscape of Port Deposit, one block of many
A celebration dancer at the Pow Wow at Perry Point*



www.rivertalkmd.com

GIANT DISCOUNT LIQUORS



5279 Pulaski Highway • Perryville, MD 21903

Less than 1 mile from the Outlets on Route 40

410-642-2200

BEER, WINE AND LIQUORS

UNDER NEW OWNERSHIP

~ American Owned ~

Open Monday - Saturday 10:00 am-Midnight

Sunday 11:00 am-11:00 pm

**15% off ON CASES OF WINE
INVENTORY REDUCTION SALE**

Ask About Our Weekend Wine Tastings

S.P. FERRARI'S

**Come Play in our
NEW Environment!**

- Clean
- Comfortable
- Band Stage
- Great Dance Floor



Under New Management

Mondays: Happy Hour ALL Night!

Tuesdays - 8 p.m.: Kickin's Karaoke

Music Every Weekend Beginning at 9:30 PM

Smoker-Friendly

Bikers Welcome

Opens: 3 p.m. Mon.-Sat.

5279 Pulaski Hwy.
Perryville, MD 21903

410-642-9882

Located Adjacent to Giant Discount Liquors

Perryville Plays

The Perryville Community Park is sincere when it uses the term 'community.' On a recent visit to the area in the early spring, it was already bustling with activity. Kids played baseball, the snack shack was open, cars scattered throughout the park brought families to fish off the dock and set-up picnics, while other folks enjoyed quiet walks along the shore.

This 44-acre park offers a variety of outdoor-related activities with its water access and fishing pier including:

- horseshoe pits
- tennis courts
- baseball & softball fields
- basketball courts
- playground
- picnic facilities
- pavilion
- restrooms

It is also possible to lease the pavilion and other facilities of the park for a family reunion, kids program, or other events.



The upcoming Diamond-in-the-Rough Triathlon on July 12 will stage their event from this park. Here is where you'll be able to watch the swimmers dive for the water for their 1 mile race, coming out to jump on their bikes for a 27 mile, rigorous ride, and return to complete a 5 mile run. Want to watch? Bring a comfy chair or blanket, maybe pack a brunch, and settle in early - we're talking by 7:30 a.m. ideally. Then watch these serious athletes test their mettle.

The view from the park can be breathtaking. This particular afternoon we could see the Skipjack MARTHA LEWIS playing off the Havre de Grace shore, a number of sailboats and powerboats, plenty of little fishing people with their moms, dads, aunts, uncles, big brothers or sisters giving them a hand. We talked with one little 5 year old who was so thrilled at catching his first fish that he was headed right back to get more to share for their dinner. Now that's community when you get to smile at an enthu-

siastic youngster who is absolutely mesmerized by his new adventure.

This all took place in late April. Just imagine the numbers who will come to enjoy this park in the coming summer months. So neatly tucked away, Perryville's Community Park truly offers a great place to take the kids or, even better, to get away from them. It offers a safe place to run and jump and make noise, and lots of little hide-away spaces to meditate, read a book, paint a picture or even take a nap.

It offers wonderful views for the photographer who enjoys capturing nature. And the various activities offer some really creative fun for the photographer who loves to catch people just having fun.

(Continued on page 5)

Ye Olde Knit Shoppe

... offering hundreds of yarns from the ordinary to the extraordinary



- Eyelash • Berroco • Cascade
- Patterns • Needles • Accessories
- Cross Stitch Threads • Classes

M-Tu-Th	10-5	410-642-9896
Wednesday	10-8	877-241-0941
Friday	10-4	
Saturday	10-3	


Corner Perryville & Cedar Court Roads
Perryville, MD 21903

www.yeoldeknitshoppe.com

LET US EXCEED YOUR EXPECTATIONS!


Only minutes from Havre de Grace, MD, select a hotel owned and operated by Hess Hotels Group and you'll be guaranteed a great stay in the area. Great rooms at reasonable rates, makes any one of our hotels listed below your best choice for lodging.

Exit 93 off I-95



COMFORT INN PERRYVILLE
61 Heather Lane
Perryville, MD 21903
(410) 642-2866

Exit 71A off I-95



COMFORT INN EDGEWOOD
1700 Van Bibber Road
Edgewood, MD 21093
(410) 679-0770

BY CHOICE HOTELS

www.hesshotels.com


SCOTTISH FESTIVAL

Steppingstone Museum
461 Quaker Bottom Rd., Havre de Grace 21078


Sunday, June 8, 2003
12 noon to 5 p.m.

Admission: \$5.00 adults
Children 12 & under/Members FREE


Featuring Christina Harrison
Singer/Songwriter from Scotland



The John F. Nicoll Pipe Band
Sheepherding
Scottish Clans & Vendors
Music & Dancing & Storytelling
Scottish Games Competitions
Scone Baking
Museum Tours/Food



Call for information,
410-939-2299
888-419-1762



STEPPINGSTONE'S Got The Blues FESTIVAL

Steppingstone Museum
461 Quaker Bottom Rd., Havre de Grace 21078

Saturday, June 21, 2003 • 2 to 8 p.m.

Live Music by:
B-More Blues Band
Liz Briones & the Spitfires
Michael Hill's Blues Mob

Serving Coors & Yuengling Beer
Boordy Wines & Food
Museum Tours

Admission: \$12 in advance, \$18 at the gate
Visa/Mastercard for Advance Sales Only

Call for information & tickets
410-939-2299
888-419-1762



Plays Continued

(Continued from page 4)

Perryville Community Park most definitely gives everyone a wonderful opportunity to enjoy the natural resources we all to often take for granted here in our own back yards.

The park is open from 7 a.m. until official sunset. It is a drug and alcohol free zone. For more info you can call the Perryville Town Hall at 410-642-6066 or e-mail:

TownHall@PerryvilleMD.org

Take out everything you take in, leaving no trash.

Help take care of the park. Remember – you'll want to come back to play again and again.

NOTE: New? Easiest way to get to park is to go down Aiken Avenue off Route 40 (main intersection before you would go across the bridge to Harford County). At the end of Aiken you come to a T. Make a left here. Continue until you see the Firehouse. The next right will take you back to the Park entrance. Enjoy!



EastCoastPowderCoat

Your Source for Custom Powder Coated Parts and Accessories:

- | | |
|-----------------------------|------------------------|
| Auto Parts & Accessories | Lawn & Garden Equip. |
| Motorcycles - Street Rods | Extreme Customizing |
| Motorcross - Quads | Wheels-Intakes-Headers |
| Jr. Dragsters - Bike Frames | Swing Arms - Pegs |
| Boat Accessories | Antiques |

Virtually Anything Metal!!!!

ECPC offers over 1,500 colors including:
Transluents - Iridescent - Glitters - Solids
-High Temps. -Textures
(All powders withstand constant 300° - High Temp. Colors withstand 1000°)



Got Metal?
We've got you covered, literally! ©

www.eastcoastpowdercoat.com

1-866-507-3377

North East, Maryland

Make Yourself At Home
At
THE GUEST HOUSE AT MT. FELIX



Spend a Night, A Week, Or Longer!

Your own private wing of this 1838 mansion with separate entrance, two bedrooms, living room, dining room, **kitchen**, 1 1/2 baths, **two fireplaces** and two private patios.

Located just on the edge of town surrounded by Farm Land with a beautiful **WATERVIEW**.

This is the place you'll return to year after year!

Visit our website at www.mtfelix.com

For information call:
410-939-9691

Be sure to
pick up our
partner-publication

For information on our
neighboring communities
Lockhouse To Lighthouse

WWW
lockhousetolighthouse.com



LUMS POND STATE PARK EQUESTRIAN CENTER

Operated by **Sunset Stables**

RIDING LESSONS

Evening & Weekend Hours 6 & 8 Week Sessions

TRAIL RIDES

Weekdays & Weekends by Appointment Only - \$25/Hour

PONY RIDES FOR

Birthday Parties, Picnics, Etc. Offered at the Park or at your location

Call (302) 834-7588 for more information

Email: sunset2261@aol.com

Located off Route 40 and 896 near Elkton, MD

We reserve the right to cancel due to lack of registration.

Port Deposit's Paw Paw Building Restored to a Museum of American Rivertown Life

By Erika Quesenbery
Paw Paw Museum Curator

The building with the strange name and the intriguing history, known originally as the Paw Paw Building in Port Deposit, was built in 1821. It was named for two paw-paw bushes which once flanked

the entrance, and today one paw paw stands sentinel at the entrance of the old structure. If you've ever heard the children's song, "Way down yonder in the paw paw patch," or "pickin' up paw paws and puttin' 'em in a basket," the name suddenly isn't so strange.

of the pseudonym utilizing historian Guyas Cutas in 1876. All of the congregants, no matter which door they used, attended services together.

Originally a one-story building, there was a high pulpit on one side and a balcony for African-Americans, reached only by the outside entrance. According to historians, including the late James Chapman, a multi-term Councilman in Port Deposit, the Paw Paw was the scene of much Underground Railroad activity. Said Cutas, "...many a runaway slave crouched in the balcony as the word was preached from the pulpit."

The second story was added by the Odd Fellows in 1857 and the familiar coating of stucco was added, as was popular at the time. The building was then

The Paw Paw was the first church structure of any denomination in Port Deposit, serving the Methodist congregation. The building had three entrances for this congregation - "one for men, one for women and one for coloreds," according to the writings

(Continued on page 7)

The Best Kept Secret In Cecil County!

6 BEERS ON TAP - DOMESTIC & IMPORT
TV with SPORT EVENTS & NEWS
JUKE BOX & POOL TABLE

Daily & Weekend Specials:
Happy Hour: Mon.-Fri. 5-7 p.m.
\$1.00 domestic drafts • \$1.50 shot of the day
Tuesday Night: 25¢ Wings
Largest wings in Cecil County, mild, medium, hot, garlic butter & BBQ

Live Music on The Weekends!
Deck with live music & bar in Spring & Summer

BOATERS! Take out food available!
Late Night Food Served!

Winchester TAVERN

Located in Historic Port Deposit • 410-378-5643
Hours: Monday through Friday 5 pm-2 am; Saturday & Sunday noon-2 am
SERVING LUNCH & DINNER

Abbe Art Gallery

Local Art/Original Art
Custom Picture Framing

Hours: Mon.-Sat. 11 am-4 pm
Closed Wed.; Sunday 12 noon-3 pm

36 N. Main Street Port Deposit, MD 21904
Shop: 410-378-3130
Cell: 410-446-9581
Nancy Kinder



Tome's Landing Marina

Where life on the Chesapeake begins
410-378-3343
Located 3 minutes from I-95 Exit 93, in historic Port Deposit, MD

The Right Time, The Right Boats, The Right Prices!

CROWNLINE
We're here for you.

PRO-LINE

POWERQUEST

Full Service Facility
Certified In VOLVO & MERCUISER
Visit us at www.tomeslandingmarina.com

Hi & Dry Storage

#1 Rated Dealer in Customer Service for the Mid-Atlantic Region

BENNINGTON
Congratulations Bennington Marine!
Ranked #1 in customer satisfaction by J.D. Power & Associates

One of Cecil County's Best Kept Secrets!

GM TUGS

CASUAL, AFFORDABLE DINING IN A COZY, WELCOMING ATMOSPHERE
OPEN FOR BREAKFAST, LUNCH & DINNER

Open 7 Days a Week

Minutes off the I-95 at Exit 93
From North or South at the light at the end of the ramp
Turn right. At the next light (about 300 ft.) turn Left.
Follow Rt. 22 into Historic Port Deposit. (about 3 miles)
We are on the right in Town Square

10 S. Main Street Port Deposit **410-378-8338**

Reservations Suggested on Weekends

Bluegrass Jam Every Sunday 4-8 pm

Paw Paw Continued

(Continued from page 6)

used as a meeting hall by Harmony Lodge Masons from 1852 to 1867 and in later years housed an academy, store and a restaurant.

Sadly this historic structure was derelict for many years, its walls crumbling and its worth fading, but in 1975 a small group made a first step in preserving Port Deposit's history. Founded by the late Grace Humphries, the Port Deposit Heritage Corporation was chartered and the Paw Paw was chosen as their first project. It was purchased by PDHC in 1975 and fundraising began in earnest to save the dilapidated building. Through grants from Maryland Historical Trust and Preservation Maryland this building was saved.

The exterior was stabilized first and for years all funds were used to replace windows and shutters, re-stucco the walls, replace the roof and add doors. Then interior work began. Finally, the first floor was completed during the summer of 1991 and the Paw Paw Museum was opened to the public on August 24, 1991. Old photos, yearbooks, stoves, clothing, authentic Civil War items and other local memorabilia were and continue to be displayed, collected and preserved here for future generations.

The second floor of the Paw Paw Museum was restored in the late 1990s, and is now used as a meeting room for PDHC and other organizations.

The Paw Paw Museum is open the second and fourth Sunday from 1 to 5 p.m., May through October, and the first Saturday of each month from 10 a.m. to 2 p.m.

The 2002 season of the Paw Paw Museum featured



the "Patriotism of Port Deposit," which was well received and enjoyed by hundreds of visitors from across the country, who also conducted genealogical research while visiting.

The 2003 season of the Paw Paw Museum features an exhibit on Snow's Battery B and Port Deposit during the War of the Rebellion, 1861-1865. The exhibit was created by museum curator Erika L. Quesenbery with assistance by museum volunteer J. Kevin Matthews.

The exhibit features Civil War relics carried into

battle by the men of Snow's Battery B, 1st Maryland Light Artillery, composed of men from the 7th District of Cecil County, primarily from Port Deposit and environs. Period photographs, many on public display for the first time, enhance the exhibit as do recreations of camp scenes such as a dog tent and officer's quarters.

The battery earned high honors and praise during the war from General Franz Sigel and Captain Romeyn B. Ayres, and were even visited by President Abraham Lincoln and Secretary of War Edwin M. Stanton who watched them drill in Northern Virginia. Transcripts of original Civil War letters written by these men, including 1st Lieutenants Theodore Vanneman, James H. Kidd and L.A.C. Gerry, Captain Alonzo Snow, and 2nd Lt. Leonard Parker are included in the exhibit, alongside Captain Snow's engraved sword, flask and pistol.

The Paw Paw Museum remains a "must see" for several tour groups throughout the northeastern United States and attracts visitors from all over the country to do research or learn a little more about the one and one-half mile long town on the Susquehanna River.

The Paw Paw features a small gift shop where copies of the PDHC published book "We Called It Everlasting Granite And, By Golly, It Is: Stories of the Port Deposit Granite Quarries" are still available. If you would like more details about the museum or would like to arrange for a tour for your group or organization please contact the PDHC Paw Paw Museum volunteers at 410-378-4480 and leave a message.

CALENDAR OF EVENTS 2003

It is highly recommended that you check with the contacts listed when making specific plans to visit for a particular event, or e-mail info@RiverTalkMD.com

ENTERTAINMENT:

CM Tugs – Port Deposit

Bluegrass Jam every Sunday 4-8 p.m.

Rendezvous Bar & Restaurant – Perryville

Live Blues every Friday and Saturday evening

SM Ferrari's – Perryville

Music every Friday and Saturday night

Kickin' Karaoke Tuesdays at 8 p.m.

Union Hotel & Tavern – Port Deposit

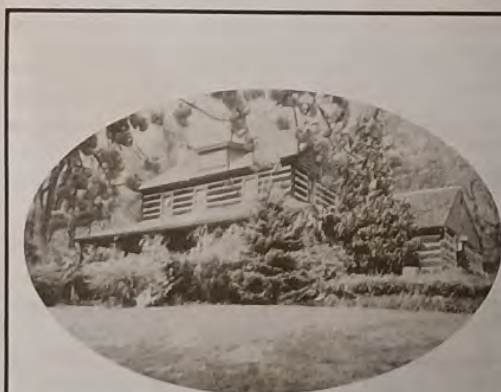
Live Blues Band – Sat. & Sun. afternoons at the Tiki Bar

Winchester Tavern – Port Deposit

Live music on the weekends – on the deck when weather permits!

MONTH OF MAY: Cecil Community College Visual Art Students Show in the Gallery open 9:30 a.m. to 5 p.m., Monday-Friday or by special appointment. Located at the Cecil Community College, One Seahawk Drive – just off Route 272 in North East, MD (exit 100 off I-95). Call the Cecil Community College Cultural Center's box office: 410-287-1023 for tickets, info, group discounts, etc. Or check their website at: www.cecilcc.edu/Cultural_Center

(Continued on page 8)



The Union Hotel

circa 1790

~ Candlelight Dining ~

Step back in time ...
for a unique dining experience
featuring fresh seafood and
succulent steaks, and an array
of other dishes, all served in a
colonial atmosphere.

Open Daily for Lunch & Dinner • Closed Mondays
~ Reservations Suggested ~

UNION TAVERN

Live Blues Band
Saturday & Sunday Afternoons
at the Tiki Bar

1282 Susquehanna River Road
Port Deposit, MD

410-378-3503



www.unionhotel-restaurant.com



CALENDAR OF EVENTS 2003

(Continued from page 7)

MAY

May 3
DARLINGTON COUNTRY FAIR from 10 a.m. to 3 p.m. at the Dublin Elementary School. Featuring parade, entertainment, car and motorcycle show, food and crafts. ADA accessible. Info: call 410-836-3690

May 4
CIVIL WAR LIVING HISTORY DAYS – Steppingstone Museum, noon-5PM. Civil War encampment, firing & drill demonstrations, period music & dance. Underground Railroad program, vendors, tours. \$3.00, info call 1-888-419-1762, 410-939-2299 or e-mail: steppingstonemuseum@msn.com

May 6-10
WATER WITCH FIRE DEPARTMENT CARNIVAL, Port Deposit, at the Woodlawn Station House #2 offering rides, games, food and fun for all ages. Info: Wayne Tome at 410-378-4223.

May 9-25
 Cecil Community College Visual Arts Student Exhibition in the Gallery open 9:30 a.m. to 5 p.m., Monday-Friday or by special appointment. May 14 is the Opening Reception with Artist from 4-8 p.m. Located at the Cecil Community College, One Seahawk Drive – just off Route 272 in North East, MD (exit 100 off I-95). Call the Cecil Community College Cultural Center's box office: 410-287-1023 info. Or check their website at: www.cecilcc.edu/Cultural_Center

(Continued on page 9)

Take to the Greenway...

A *Greenway* is about *connections*. The Lower Susquehanna Heritage Greenway is a natural corridor connecting towns, public and private lands, historic sites, woodlands and open spaces, along one of the nation's most beautiful and abundant waterways.

A *Greenway* is also about *personal* connections. By viewing the river from its many vantage points in parks and cities, by breathing the refreshing air of the forest and shoreline, and by walking the many trails and footpaths, where wildflowers and wildlife abound, we restore our sense of wonder and belonging.

Taken from LSHG brochure

Not much can be added to describe the awe and inspiration that can be found along the LSH Greenway. Combine the communities of Darlington, Havre de Grace, Perryville and Port Deposit with the Susquehanna State Park, area museums, historic buildings, the Skipjack MARTHA LEWIS, and Garrett Island and you have a formula for true re-creation of body and spirit.

The wildflowers begin to peek from the soft, dark earth. The birds fly back and forth with their straw, twigs, hair and other building materials. The boats come out of their winter haven to bring their owners their source of joy on the water. All offering the certain signs that the winter has been melted by the spring sun.

The number of hikers, bikers, paddlers and sailors multiply as those of us who have been waiting for this season break out of our winter doldrums to breathe in spring's promise. The area streams and waterways blossom with

fishing enthusiasts.

The Lower Susquehanna Greenway area is tucked neatly between the major metropolitan areas of Philadelphia and Baltimore/D.C. The area offers more than 45,000 acres of hiking, biking, boating, fishing, bird watching and picnicking fun to the urban/suburban lifestyle.

Steppingstone Museum is nestled within the Susquehanna State Park. The museum preserves and demonstrates the rural arts and crafts of the 1880-1920 period in Harford County including, domestic arts, skilled trades and husbandry. A variety of artifacts are exhibited and demonstrated throughout the buildings.

The turn-of-the-century home charms the visitor. Experience the daily life of the period in the formal sitting room, sleeping quarters and the kitchen with its woodburning stove and icebox. Quilts, lace work, dolls, toys, books and other memorabilia are displayed throughout the house.

In the various outbuildings are restored handtools of the blacksmith, joiner, woodwright, cooper, potter, wheelwright, diary farmer, spinner and weaver. The big barn is a replica of a 19th century general store, a veterinarian's office and a decoy carver's workshop. The carriage barn displays carriages, buggies and sleighs.

The new cannery building should be open this summer offering another unique display of rural crafts of the time.

(Continued on page 9)

Draft of the Lower Susquehanna Heritage Greenway Trail Plan

This chart complements the map on page 10-11

Color Code	Trail No.	Trail Description	Trail Status	Trail Characteristics	Trail Length	Trail Needs	Trail Maintenance
Red	1	Conowingo Dam to Deer Creek	Open	Very flat, ideal for bikes, horses, birding. Interpretive markers, subject to closure.	3	None	MD DNR
Med. Blue	2	Deer Creek to Lapidum	Open	Thru historic structures parallel to canal, great river views. Trail is primitive.	2	Wider Safer	MD DNR
Med. Green	3	Lapidum to Arundel Quarry	2005	Endangered species, essential link, unique aquatic habitat	2	bridges, wetlands	MD DNR
Lt. Blue	4	Around Arundel Quarry	2006	Geology interpretation, extreme caution, tremendous vista, exertion factor	1	Stairs, signs	Arundel LaFarge
Dark Blue	5	Arundel Quarry to Susquehanna Lockhouse (North Park Loop Trail)	Open	Flat, rare vegetation, environmental education, very accessible, old RR line.	2	Signs, reg. care	Museum, H de G Lions
Lt. Green	6	Susquehanna Lockhouse to end of Promenade	Open	Urban, handicap accessible, tourism, birding, lighthouse	1	Signs	City of H de G
Dark Green	7	Promenade to Swan Creek Point at Oakington	2007	Industrial park challenge, old forest, manison, rare species, Gasheys Creek	4	Plan	Harford County
Lt. Purple	8	Conowingo Dam to Octoraro Creek	2004	High water challenge, security, access issues, artifacts, eagle, heron rookery	1	Plan	EXELON & club
Dark Purple	9	Octoraro Creek to Port Deposit	2003	Canal mule towpath, athletic fields, flood plain forest, highway safety.	5	Plan	Scouts & club
Olive Drab	10	Port Deposit Town Limits	Open	Flat, accessible, needs signage, village quaintness, ownership issues	1	Signs	City & businesses
Lt. Yellow	11	Port Deposit to Perryville Town Limits	2005	Narrow trail, R.R. issues, cliff face, nebulous connecting points.	2	Plan & safety	Frenchtown & club
Dark Yellow	12	Perryville Town Limits to Rogers Tavern (Canning House Run Trail)	2004	Garrett Island access, residential, handicap friendly, rollerblade options.	1	Grass & litter	Perryville & club
Pink	13	Rogers Tavern to end of Perry Point Loop	2004	Bay vista, recreation opportunity, confluence of river & bay.	2	Plan	Hospital & club
Med. Red	14	Perryville to Principio Furnace	2005	Oldest deciduous forest in Cecil, Furnace Bay overlook, historic site, Kayak launch.	3	Plan	IKEA & club
Orange	15	River Crossing - Havre de Grace to Perryville	2006	Crossing options, navigation concerns, essential for trail loop.	1	Plan	TBD
	16	North of Conowingo Dam	2010	Critical to York link, snakes, rough terrain.	6	Plan	TBD

Take to the Greenway... (Continued from page 8)

The vast grounds are enhanced with a variety of trees and shrubs, perennial flowers, a cutting garden, and a herb garden. There's a pavilion on the grounds that can be rented for events such as weddings and reunions.

Steppingstone Museum is open 1-5 Saturdays and Sundays beginning May 1st and ending the end of October.

Susquehanna State Park is a short drive (or hike away) and well worth the visit. Offering over 15 miles of marked and maintained trails, it's the perfect place to enjoy the natural beauty of the area. The trails range from easy to difficult and there's an excellent trail that's flat and easy for

family hiking and biking and is handicap accessible.

The **Rock Run Grist Mill** built in 1794 is a 3-story stone structure that is fully operational. The water-powered mill is operated on weekends from May 1st to Labor Day. Corn is ground into meal in public demonstrations held from 1-4 p.m. The meal is bagged and given free to the public.

Inside the mill are displays of 19th century farm and mill equipment. There are some great photos showing the cutting of ice on the Susquehanna River. You can learn more about the mill and other buildings, campsites, etc. by calling park information at 410-557-7994.

In Perryville, **Rodgers Tavern**, **Principio Furnace** and the **Perryville Train Station** are all part of the Lower Susquehanna Heritage Greenway program. The entire town of Port Deposit is on the National Historic Register. With the shore line **Riverwalk**, **Marina Park** and the **Paw Paw Museum** in Port Deposit also being part of the Greenway.

There is much to be shared in future issues and on our websites regarding the Greenway. We hope we can encourage you to return again and again to visit the many sites, getting a sense of the history of the area while enjoying the beauty of the outdoors and the friendliness of our communities.

Susquehanna State Park

Just off Route 155 outside of Havre de Grace
Information call: 410-557-7994



This park is made up of approximately 3600 acres that contains over 15 miles of marked and maintained trails, ideal for hikers, mountain bikers, equestrians and nature lovers. The terrain varies throughout the river valley. The different trails have ratings ranging from easy to difficult.

The Lower Susquehanna Heritage Greenways Trail runs between the Conowingo Dam and Stafford Road at Deer Creek. It's an excellent flat trail for family hike and bike outings. It is also handicap accessible.

Camping opens May through September and offers 6 sites for RVs requiring electric at \$25/night, 6 mini-cabins (bunk and double beds) for \$40/night and tent camping for \$20/night. There are a total of 69 campsites. Seniors - 62 and older - receive a 1/2 price discount Sunday through Thursday.

You can also enjoy picnic areas, historic tours of the Rock Run Mill, Rock Run House and Toll House. From here you can enjoy Deer Creek, Lapidum Landing, and the Susquehanna River.

HOURS: Year Round 9 a.m. - sunset

Call: 410-557-7994 or check out their website at: www.dnr.state.md.us/

**Play - Explore - Relax
Visit Susquehanna State Park!**



GEORGE'S PLACE

Antiques, Collectibles & Furniture

Specializing in:
Fenton & Westmoreland & Carnival Glass,
Wedgwood, Royal Doulton & Hummels

- NEW -
Furniture: Oriental & Amish
Much, Much More!

454 Franklin Street 410-939-6398
Havre de Grace Home: 410-676-0939

BUY SELL TRADE

SPORTS & NONSPORTS CARDS
OLD & NEW TOYS

BAHOURAS

COLLECTABLES
ANTIQUES & COLLECTIBLES

*Furniture • Glass • Pottery
Beer & Bar Collectables
Sports Memorabilia*

467 Franklin Street
Havre de Grace, MD 21078
410-939-4146
GEORGE & PENNI
EMAIL: gwagner@erols.com

CALENDAR OF EVENTS 2003

(Continued from page 8)

May 10
SPRING FLING at Rodgers Tavern in Perryville. Takes place from 9 a.m. to 3 p.m. Spend a wonderful day at a beautiful spot along the Susquehanna River, enjoying food, music and a great variety of vendors and artists. Info: 410-642-3703

May 17
WATER WITCH FIRE DEPT AWARDS BANQUET at Perryville Fire Dept. Contact: Wayne Tome at 410-378-4223

May 29-June 1
STEPPINGSTONE 2nd ANNUAL SHEEP DOG TRIALS - 9AM - 5 PM, sheep dog trials in historic farm setting; ultimate test of handler and stock dog (handlers from all over the U.S.); vendors, food, tours, \$3.00, info call 1-888-419-1762, 410-939-2299 or e-mail: steppingstonemuseum@msn.com

May 30
4th ANNUAL HARFORD HOSPICE REGATTA - This year's exciting fundraiser has moved to the Maritime and Decoy Museum area, Havre de Grace. Enjoy the sailboat races, the beautiful area along the Promenade, dancing to the music of DJ Roy Elder, great food, silent auction and an all-around fun time with music and comedy entertainment by the Pyrates Royale. Call ahead for tickets, they go fast! \$35/person. All proceeds benefit the Harford Hospice program, offering palliative care to families with patients facing a life-limiting illness. Advance sale tickets only, no ticket sales at the gate. Call 443-643-3460 for tickets or information.

(Continued on page 10)

Spencer Silver Mansion

Bed & Breakfast
Try our carriage house with whirlpool bath and fireplace.



410-939-1097 or 1-800-780-1485
www.spencersilvermansion.com
200 S. Union Avenue
Havre de Grace, Maryland

MENTION THIS AD AND SAVE 10%

The Country Flower Shop and Garden Center

Havre de Grace's Oldest Flower Shop

Arrangements • Cut Flowers
Come See Our
SEASONAL GREENHOUSES
Herbs • Annuals



• Telefloral Wire Service •

500 N. Union Avenue • Havre de Grace, MD
410-939-2720 • Fax 410-939-6547

Monday-Friday 8 am - 6 pm; Saturday 8 am - 5 pm; Sunday 8 am - 3 pm

Richard C. Tome, Certified Master Balloon Artist

Always looking for pin-back buttons to swap!

CALENDAR OF EVENTS 2003

(Continued from page 9)

May 31

GREATER PERRYVILLE CHAMBER OF COMMERCE BUSINESS EXPO – 10AM – 4 PM at the area around Happy Harry's and the First National Bank of North East (off Route 40) - open to Harford and Cecil County businesses. Great place for the public to learn more of the services and products offered in our area. Info.: 410-642-3703 (Raindate Saturday, June 7)

JUNE

MONTH OF JUNE: Cecil Community College Visual Art Alumni Art show in the Gallery open 9:30 a.m. to 5 p.m., Monday-Friday or by special appointment. Located at the Cecil Community College, One Seahawk Drive – just off Route 272 in North East, MD (exit 100 off I-95). Call the Cecil Community College Cultural Center's box office: 410-287-1023 for tickets, info, group discounts, etc. Or check their website at: www.cecilcc.edu/Cultural_Center



June 20-21	8 p.m.
June 22	3 p.m.
June 27-28	8 p.m.
June 29	3 p.m.

ANYTHING GOES – offered by the Covered Bridge Theatre Company offers music & lyrics by Cole Porter, book by Guy Bolton and P.G. Wodehouse. Enjoy this ever-popular musical comedy set on the ocean liner America bound for England. Reno Sweeney, famed Evangelist and nightclub star, along with her six beautiful "Angels" are causing a stir on shipboard. Billy, a young Wall Street executive, while delivering a passport to his boss, notices the girl of his dreams on board. He decides to stowaway to be with her. Billy is aided by Moonface Martin, Public Enemy #13, and his gun moll, Bonnie. Mistaken identities, disguises, and general misadventures all contribute to a hilarious crossing, which leads to a surprising ending! Some of Cole Porter's best loved songs appear in this production including I Get a Kick Out of You, D'Lovely, Friendship, Take Me Back to Manhattan, Let's Misbehave, You're the Top and, of course, the exuberant title song, Anything Goes. Filled with tap dancing, high kicking and tons of laughs, this is truly a musical to lift your spirits. Located at the Cecil Community College, One Seahawk Drive – just off Route 272 in North East, MD (exit 100 off I-95). Call the Cecil Community College Cultural Center's box office: 410-287-1023 for tickets, info, group discounts, etc. Or check their website at: www.cecilcc.edu/Cultural_Center (Tickets: \$11 - \$17)



JUNE 7

NATIONAL TRAILS DAY – 9 a.m. to 1 p.m. Become acquainted with the newest trails of the Lower Susquehanna Heritage Greenway. ADA Accessible Info: 410-457-2482

DARLINGTON HERB FESTIVAL – 10 a.m. to 4 p.m. on Shuresville Road in Darlington. Herbs, flowers, antiques, floral crafts, storytelling, entertainment and refreshments. ADA Accessible. Info: 410-836-9138

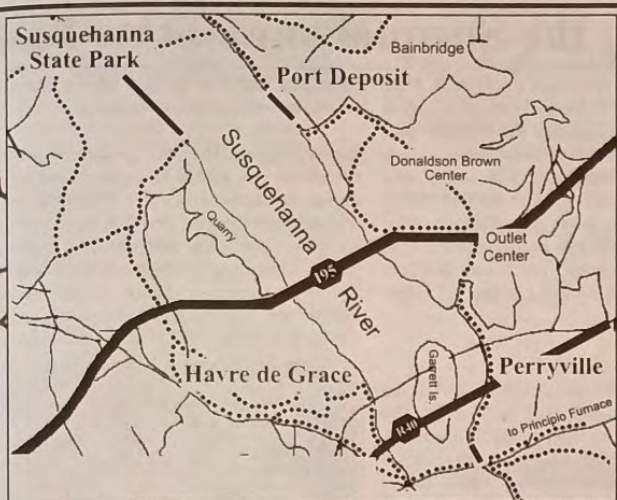


You could be reaching a unique niche of at least 40,000 interested readers

Your Ad Could Sponsoring the center m

Contact Ellie @ 410-939-8424 or e
www.RiverTalkMD.com or www.Lock

(Continued on page 11)



DRAFT - COURTESY OF LSHG

CALENDAR OF EVENTS 2003

(Continued from page 10)

June 7-8

EAGLES NEST AMERICAN INDIAN CELEBRATION – 11 a.m. to 5 p.m. American Indians honoring of Veterans, flag ceremony, drumming, dancing, special ceremonies, Perry Point Veterans Administration (Perryville). Info: 410-642-1091 or 410-885-2800



June 8

SCOTTISH FESTIVAL – Steppingstone Museum, noon – 5PM, Scottish entertainment, vendors, clans; sheepherding, spinning & weaving; pipe band music; dancers; amateur games competition;

food; tours; free parking. \$5.00, info call 1-888-419-1762, 410-939-2299 or e-mail: steppingstonemuseum@msn.com

June 21

SUMMERTIME BLUES FESTIVAL – Steppingstone Museum, 2-8 PM. Enjoy spectacular countryside views while listening to great live blues music plus beer, wine and food, tours! \$, info call 1-888-419-1762, 410-939-2299 or e-mail: steppingstonemuseum@msn.com

June 29

DARLINGTON/DUBLIN INDEPENDENCE DAY CELEBRATION – 5:30 p.m. to Dark. Parade steps off at the top of Main Street and marches to Francis Silver Park, Darlington. Entertainment, food and refreshments – or bring a picnic basket. Fireworks display at Dusk. ADA Accessible. Info: 410-836-3434

JULY

July 11

Join the Perryville Community for the **IRON-BIRDS EVENING BALL GAME** prior to the Diamond-in-the-Rough Triathlon. \$15/per person incl. bus trip, admission, hat. Tickets available now. Contact: Barbara Ballard at 410-642-3688

July 12

DIAMOND in the ROUGH TRIATHLON

(US Triathlon sanctioned race) – join us at the Perryville Community Park for the first area triathlon. Arrive before 7:30 am ... Leave after lunch. Watch the courageous athletes start with a 1-mile swim off the fishing pier in the park, running up to their bikes for a 27-mile arduous race towards Conowingo Dam, then return for a muscle-killing 5-mile run to the river and back. The transitions all take place at the park where there's plenty of room for you and your family to enjoy the playground, a Frisbee toss or two, a picnic or a munchie from the vendors. Info for participants in the triathlon, contact: www.piranhasports.com See article in this issue. For info as an enthusiastic observer, contact: 410-642-6066 and ask for Barbara Brown

Ad Could Be Here!

oring the center maps & calendars

Ellie @ 410-939-8424 or email: ellieoops@aol.com
erTalkMD.com or www.LockhouseToLighthouse.com

(Continued on page 12)

Harford County Bikers for Babies MARCH of DIMES RIDE

Sunday - AUGUST 17, 2003

This March of Dimes Ride, the 2nd largest charity motorcycle ride in the country has worked on a grassroots level to penetrate the huge motorcycle riding market. In the past eight years, motorcycle riders, sponsors, in-kind donors and volunteers in 42 U.S. cities have raised more than \$7,000,000 to support March of Dimes goal to save babies' lives.

This structured uniform charity motorcycle ride will begin at Jones Junction, 1506 Bel Air Road, Bel Air, MD at approximately 1 p.m. The 50 mile escorted ride through Harford County will end in the City of Havre de Grace, MD around 2:30.

Enter your motorcycle and join the ride. Or bring your family to Havre de Grace to view several thousand motorcycles, meet the riders, and just have fun downtown at sidewalk sales and other activities. Enjoy the roar and know it's to help save babies' lives.

Call for info to enter or sponsor a rider. March of Dimes RIDE: Deanna (410) 752-7990 Or keep an eye on the Havre de Grace activities at: www.hdgtoism.com or www.LockhouseToLighthouse.com



BLUE EARTH LEATHER

Turquoise • Native American • Sterling Silver Jewelry • Custom Leather Goods
Leather Repairs • Minnetonka Moccasins

*You'll want to stop by
and check out our*

Monthly Sales Specials

*Mention this ad and receive an
additional discount!*

Monday: 10:30 a.m. - 6 p.m.; Tuesday-Thursday: 10 a.m. - 6 p.m.
Friday: 10 a.m. - 7 p.m.; Saturday: 10 a.m. - 5 p.m.; Closed Sundays

214 N. Washington St., Havre de Grace, MD

410-939-1188

E-mail: blueearthleath@aol.com

Access Computers

*When Your
Computer
Connections
Matter ...*



"Over 5 Years in Havre de Grace"

Roger Lang
410-939-6500

212 N. Washington
Havre de Grace

email: email@accesscomputerz.com

Amanda's

Florist

Amanda DiDomenico, Owner

Candles • Cards & Gifts • Lighthouses
Arrangements - Dried & Fresh

Cut Flowers

Havre de Grace Wind Chimes

203 N. Washington St. - Havre de Grace, MD

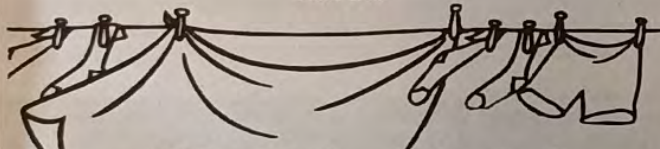
410-939-5403

Monday thru Saturday 9 am - 5 pm

WHETHER YOU'RE A RESIDENT OR JUST PASSING THROUGH:

LET US HELP LIGHTEN YOUR LOAD

visit the



Fluf 'n Fold

Coin-Operated Laundry

SAME DAY DROP-OFF SERVICE

&

BULK DRY CLEANING

(by The Pound Or The Garment)

868 Ostego St. • Havre de Grace

Near the Route 40 Intersection

410-939-7121



**BRING THIS AD IN AND RECEIVE 10% OFF
YOUR DRY CLEANING OR DROP-OFF SERVICE**

*Tell
everyone
you saw
it in
RiverTalk
MD*

*Share
RiverTalk
with your
neighbors.*

*Send one
to a friend.*

*Advertise
in
RiverTalk*

CALENDAR OF EVENTS 2003

(Continued from page 12)

July 14

1 p.m. - THEODORE ROOSEVELT and the DEVELOPMENT of the MODERN AMERICAN PRESIDENCY (a lecture and discussion charting the rise of the style of presidency and government activity which Roosevelt created) by Doug Mishler. NOTE: This takes place at Elk Landing, 590 Landing Lane, Elkton.

July 14

American Bluegrass by Dean Sapp and then An EVENING with H.L. MENCKEN performed by Chuck Chalberg.

July 15

Music of the Times by the group Borderline Conspiracy and then An EVENING with THEODORE ROOSEVELT performed by Doug Mishler.

July 13

SUMMER FUN DAY at STEPPINGSTONE MUSEUM - noon to 5PM, lawnmower races, ice cream eating contests, frog jumping, turtle races (bring your own pet), sack races, marble shooting, face painting, crafts, food. \$3.00, info call 1-888-419-1762, 410-939-2299 or e-mail: steppingstonemuseum@msn.com

July 19

DARLINGTON BLUEBERRY FESTIVAL from 9 a.m.-3p.m. - Deer Creek Friends Meeting, 1212 Main Street, Darlington. Fresh blueberries, blueberry baked goods, jams, jellies, crafts, plants, flowers, produce, food, entertainment, white elephant table and auction at 11 a.m. ADA Accessible Info: 410-734-0480

AUGUST

August 7

CONCERT on the LAWN - at Rodgers Tavern in Perryville. Enjoy the great entertainment offered by "How's My Hat" - a wonderful way to enjoy a summer. Contact: Barbara Ballard 410-642-3688

August 8-10

CROWNLINER OWNERS EVENT at Tomes Landing Marina, Port Deposit - a great place to watch a lot of fine boats. Info: 410-378-3343

August 23

CRABFEAST sponsored by the Water Witch Fire Department, Port Deposit. Info: 410-378-4223

NORTHERN CHESAPEAKE POKER RUN at Tomes Landing Marina, Port Deposit. Contact: Jack Conrad at 410-378-3343

SEPTEMBER

Sept 23

6th ANNUAL RECEPTION & AUCTION FUNDRAISER for LOWER SUSQUEHANNA HERITAGE GREENWAY. 5-9 p.m. - location TBA - info and tickets: 410-457-2482

Sept 27-28

FALL HARVEST FESTIVAL & CRAFT SHOW - Steppingstone Museum, 11AM-5PM, scarecrow making, crafts, country music, square dancing, clogging, apple cider pressing & apple bobbing, corn shelling, straw maze, baking contests, hayrides, food. \$ Call 1-888-419-1762, 410-939-2299 or e-mail: steppingstonemuseum@msn.com

(Continued on page 15)

Pedaling the Susquehanna State Park

Continued from page 12

Getting to a good starting point for each trail is pretty easy since most trails cross over the roads that lead into the park. A good central starting point for your ride is the Old Mill at Rock Run Landing. Located on the shore of the Susquehanna River there is a goodly bit of activity here. Keep alert for cars. From here you have three options.

Starting Points from Rock Run Mill:

Option 1. *Approx. 1.3 miles - Easy* Take Stafford Rd. west, which is well-maintained blacktop to Deer Creek Picnic area, Craig's Corner Rd. and the Greenway trail. Heading west on Stafford Rd. 1/2 mile past the Old Mill is the railroad trestle bridge. Here is a good spot to start the Greenway trail. The ride is right along the Susquehanna River with plenty of access points to the river. This trail is easy and mostly flat but watch for trees and roots. This section takes you to the rail bed portion of the Greenway trail.

Approx. 5 miles and a great ride for family and children: The Greenway trail is part of the Lower Susquehanna Heritage Greenway Trail System. A former railroad used for transporting construction materials from Havre de Grace to Conowingo Dam, it is now part of the rails to trails system. The Greenway is a straight flat ride to Conowingo Dam. It's a very easy ride with signs and markers describing the areas history.

If you bypass the ride over the railroad trestle, you can make a stop at Deer Creek Picnic area 1.1 miles from the Old Mill. In the far back corner to the right the trails continue. Deer Creek trail (green) is a loop trail contained in the picnic area. I have never ridden it so I can't comment on it. Once you cross the small footbridge and head right the trail starts to climb. Reaching the top it opens up to the field trail above the campground. This is actually the Susquehanna Ridge trail (red).

Heading out of Deer Creek Picnic area you come to a fork in the road. Stafford Rd crosses Deer Creek here. Also another entrance for the Greenway trail right over the bridge and to the right. Craig's Corner Rd is the left fork. *Road riders take note* Craig's Corner is gravel up to the campground entrance so the going can get rough on those narrow tires and rims.

Option 2. *Challenging* Take Rock Run Rd. to Wilkinson Rd. to Ivy Branch trail (orange) across



Believe it or not there are 3 or 4 heron enjoying 'lunch' on these rocks at the Rock Run Mill area.

from the maintenance complex. Ivy Branch trail is wooded and easy to moderate with few stones or logs. Rock Run Rd crosses Farm Run trail (blue.) To the west it ends at Deer Creek Picnic area. Take the eastern route at the old Stone Mansion, here it picks up Rock Run trail (yellow), Land of Promise trail (white) and Susquehanna Ridge trail (red.) All these trails are serious calf burners.

Ascents and descents are rocky with roots and logs just to make it fun. Lots of switchbacks here. This

series of trails are moderate at places but most of the ride is difficult to say the least.

Option 3. Take Stafford Rd. east to Lapidum Landing. The road is packed gravel with many potholes. Stafford Rd. can be busy during weekends so be aware of the traffic. If you're riding just the perimeter of the park use Stafford Rd. and head up Lapidum Rd to Webster Lapidum Rd. Also Lapidum Landing is where Susquehanna Ridge trail (red) begins or ends depending on your point of view.

Starting points from the entrance to the campground off Craig's Corner Road:

Park outside the campground. There are plenty of areas to pull off the road. You have three options here.

Option 1. Easy to Moderate

The campground is my personal favorite. Pass through the campground gate and proceed approximately 1/4 mile. Make a right turn at the top of the hill at the park information sign.

This is a steady pull through the single track in the field. As you reach the top of the grade it is the sweeping, panoramic view that captivates you. This is such a great place to rest and take in the pastoral views. You are on the Susquehanna Ridge trail (red) at this point. The ride can be fast or slow depending on your likes. You can take the Susquehanna Ridge trail (red) all the way back to Lapidum Landing or take the downhill run at the end of third field to Deer

(Continued on page 15)



Christmas Magic

"Gifts and Collectibles for all Seasons!"
...and other fine Collectibles and Unique Items!

Featuring:

• Christopher Radko	• Old World Ornaments
• Department 56 Villages	• Byers Choice Carolers
• Cherished Teddies	• Olszewski Miniatures
• Baldwin Brass	• Lang & Wise
• Boyd's Bears	• Brandywine
• Fontanini	• Snowbabies
• Blue Sky	

311 St. John Street
in Historic Havre de Grace, MD
www.christmasmagictmd.com
410-939-8782

- Hours -
Monday thru Thursday: 10:00 a.m. - 6:00 p.m.
Friday and Saturday: 10:00 a.m. - 8:00 p.m.
Sunday: 11:00 a.m. - 6:00 p.m.

Visit this exciting Women's Clothing Boutique
in historic, downtown Havre de Grace...

Fun, Funky or Functional

Waiting for the Tide...

offers comfortable, unique
clothing and accessories including



- Hand Knits
- Sweaters/Slacks
- Skirts/Dresses
- Blouses/Tops
- Handbags/Jewelry
- Beautiful Silk Scarves
by Colourful Stitches

Present this ad and receive 5% off!

211 N. Washington Street
Havre de Grace, MD
410-939-5700

Quintessential clothing for the free-spirited woman!



THE CORK & BARREL

FINE WINE AND SPIRITS

*Havre de Grace's newest upscale liquor store
catering to local residents, boaters and tourists.*

Features of the shop include:

- Knowledgeable and friendly staff
- An extensive wine selection for all price ranges
- Excellent beer and liquor selections with competitive pricing.
- A variety of cheese and snacks.
- Free delivery service to your B&B or boat if it's at one of our local docks
- Customized gift baskets
- Gift Certificates

137 N. Washington Street
Havre de Grace, MD 21078
410-939-8002 • Fax: 410-939-6061

Pedaling continued

(Continued from page 14)

Creek Picnic area. As always there are many side trails that lead to other parts of the park. Enjoy the view and the ride.

Option 2. Easy to Moderate Take Craig's Corner Rd. to Wilkinson Rd. You can catch the Ivy Branch trail (blue.) Across from the maintenance complex or continue on Wilkinson Rd. to Rock Run Rd. until you see Steppingstone Farm Museum where you can pick up Land of Promise trail (white.)

Option 3. Easy Ride Craig's Corner Rd. Down to Deer Creek Pumping Station and on to Stafford Rd. This is a fast ride down on a packed gravel surface, so watch your speed.

Starting points if you enter the park from Lapidum Road (2 options):

Options 1. Easy to Challenging Approx. 9 miles Follow Stafford Rd. to connecting trails at the Old Mill or Deer Creek Picnic area. You can ride the roads around the entire perimeter of the park if you want. At places you will be outside the park. Here is the route if you decide to ride it: Stafford Rd. to Craig's Corner Rd. to Wilkinson Rd. to Rock Run Rd. to Quaker Bottom Rd. to Webster Lapidum Rd. to Lapidum Rd. back to Stafford Rd.

Option 2. Difficult The Susquehanna Ridge trail (red) begins right before at the stop sign for Lapidum Rd. Stone ruins of an old house marks the spot for the beginning. There is no warm up for this one. It starts off steep with switchbacks and turns the first few hundred yards or so. Susquehanna Ridge trail (red) is not for the faint of heart. This part of the trail is by far the most technical in the park. So be advised you may be walking parts of this trail either on the ascent or down hill. Some of the descents require considerable technical expertise. If you attempt to ride the descents

without the ability, bring the instruction manual to read while you're flying over the handlebars. You can take the cheat and walk or go for the meat and ride. Wear your helmet and bring your Second Skin with you. By the way the view is fantastic along the Susquehanna Ridge trail (red.)

Note: The Susquehanna Ridge trail (red) is a very technical trail as are many of the trails within the park. But without a doubt this is the most demanding. If I ride this trail, I end at Lapidum Landing instead of starting here. The ride is tough right from the start. I prefer to start this trail above the campground or at the old Stone Mansion but the choice is yours.

The rides on these trails are a great workout with lots to see and explore. As stated earlier here are a few key places and sites to explore on your ride. The Old Mill at Rock Run Landing. The Stone Mansion at Rock Run landing. The ruins of an old pig iron kiln at the entrance to the Greenway trail.

Steppingstone Farm Museum on Quaker Bottom Rd. Very old Oak, Elm and Sycamore trees exist within the borders of the park so as your riding keep an eye open for them. They are so old they could be in a J.R.R Tolkien novel.

Now that you know a little more about the different trails and areas to ride in Susquehanna State Park, here are directions that will deliver you there.

From Interstate 95 take exit 89 to Rt. 155.

North bound traffic merge onto Rt. 155. Drive approximately 1/4 mile to Lapidum Rd, turn left.

South bound traffic turn left and drive approximately 1/2 mile to Lapidum Rd, turn left.

From *Havre De Grace* take Rt. 155 one (1) mile out of the city limits to Lapidum Rd and turn right.

Follow Lapidum Road for 2.4 miles to **Lapidum Landing.**

(Continued on page 16)

CALENDAR OF EVENTS 2003

(Continued from page 13)

OCTOBER

October 4

DARLINGTON APPLE FESTIVAL - 10 a.m. to 5 p.m. An old fashion day in the country. Apples, entertainment, country market, refreshments, ADA accessible. Takes place on Shuresville Road in Darlington. Info: 410-457-4189

October 11

PERRYVILLE FALL APPRECIATION DAYS PARADE and AUTUMNFEST - 9 a.m. til 3 p.m. - follow the parade that begins at 10 a.m. along Aiken Avenue to Rodgers Tavern. Then enjoy a great fall event of artists, vendors, music and food. Info: 410-642-3703 or 410-642-6066 and ask for Barbara Brown

NOVEMBER

Happy Thanksgiving to everyone!

DECEMBER

Dec 6-7

CHRISTMAS OPEN HOUSE - noon-4PM, Steppingstone Museum, historic house decorated for the holidays; cookies & cider served in the kitchen; music in the parlor; museum store open for holiday shopping. No admission fee. Info call 1-888-419-1762, 410-939-2299 or e-mail: steppingstonemuseum@msn.com

Dec 7

HOLLY TREE LIGHTING CEREMONY 4-6 p.m. Join us to light the B&O Railroad's Travelers Christmas Tree; Holly Tree Park off Jackson Station Road in Perryville.

Dec 14

ANNUAL TREE LIGHTING - Rodgers Tavern at 359 Broad Street in Perryville at 6 p.m. - lighting of the Community Tree accompanied by carolers. Info: 410-642-6066

Your Ad Could Be Here!

for only \$84

each publication

You could be reaching a unique niche of at least 40,000 interested readers

Contact Ellie @ 410-939-8424

elliecoops@aol.com

www.LockhouseToLighthouse.com

www.RiverTalkMD.com



Enjoy "comfortably elegant" lodging & events at the top of the Chesapeake

All rooms offer:

- Full breakfast every morning
- Private baths / Cable TV
- Phones w/ data ports & voice mail
- Iron, ironing board & hair dryers
- A clean, smoke-free environment

... private porches, gas fireplaces and whirlpool tubs also available!

Vandiver Inn
A Kent/Murphy Guest House

Historic Havre de Grace, MD

800.245.1655

vandiverinn@comcast.net www.vandiverinn.com

Pedaling continued Key Event of Top Triathlon Series Hosted In Perryville

(Continued from page 14)

If you're heading to the Old Mill at Rock Run Landing, drive 3/4 of a mile. Turn right on Earlton Rd. to Webster Lapidum Rd to Quaker Bottom Rd. to Rock Run Rd. to the Old Mill on Stafford Rd.

Susquehanna State Park is a fantastic place for bicycle riding. Offering a variety of terrain and trails you will be challenged on every turn and climb. Though Susquehanna State Park is not huge, it has much to offer whether it is technical single track riding or a relaxing ride in the meadow under the open sky. I hope you will find time to explore and discover this wonderful state park outside Havre de Grace. See you out there and enjoy the ride.

Regards,
Walt Johnson
April 28th, 2003

Walt Johnson is an avid kayaker and trail rider. Most Sundays he can be found on a float trip with friends on local creeks and rivers. His short-term goal is to kayak all run-able creeks in Harford County. Born at Aberdeen Proving Ground, Walt has been a resident of Havre de Grace since 1999. Prior to that he lived in VA and SC for 14 years. He is presently employed at ATK Elkton LLC.

What an exciting way to introduce a unique niche of visitors to the Lower Susquehanna Greenway area. The Town of Perryville will host the Diamond-in-the-Rough Triathlon for the first time this year. This exciting event on July 12 will bring hundreds of athletes from the mid-Atlantic region to the Lower Susquehanna Greenway area as the 3rd event in a 7-series challenge.

This event is part of the sanctioned U.S.A. Mid-Atlantic Regional Club Championship Race that began with the Brandywine Valley Duathlon on April 12th in Delaware City, DE.

The 2nd event will be the Fort Delaware Triathlon in Fort Delaware State Park, Delaware City, DE. This second event is scheduled for June 21st.

The Diamond-in-the-Rough will be staged at the Perryville



Community Park. This event will offer a 1-mile swim in the waters off the park area, followed by a muscle-cramping 27-mile bike towards the Conowingo Dam and back. This run includes a 7.5% grade climb at mile 22 that will certainly separate the serious from the just-having-fun athletes. (Of course, personally, I would have to question even the just-having-fun variety!) This will be followed with a 5-mile run when the cyclists return to Perryville Community Park.

If you're wondering how you might enjoy this event as an observer, there are several ways. First, you could take a picnic brunch and be at Perryville Community Park early in the morning. This means before 7:30. Otherwise, you'll end up being in the way of athletes. But you're sure to get a first-hand sense of the excitement of this event as they move to the water, then compete to be first out of the park on their bicycles.



Truly the best, freshest Italian Food!

410-939-1401
410-939-1402
FAX: 939-0446

OPEN 7 DAYS
M-TH: 10:30 a.m. - 10 p.m.
F-SAT: 10:30 a.m. - 11 p.m.
SUNDAY: Noon - 9 p.m.

Beer and Wine now available on the premises!

103 N. Washington Street

GREAT BOOKS AT A GREAT PRICE!



- Over 8,000 Comics and 60,000 books in stock -
WASHINGTON STREET BOOKS
410-939-6215

131 N. Washington • Havre de Grace, Maryland
www.washingtonstreetbooks.com

Marine Covers & Upholstery

POWER & SAIL BOATS

Designed & fabricated by Jeff Harris, owner

Top Quality Craftsmanship
Slips Available



410-939-3041

NEW LOCATION
204 Congress Ave.
Havre de Grace,
MD 21078

BaySail

Sailing School & Yacht Charters



Offering sailing instruction, yacht charters and sailboat rentals.

Located in Tidewater Marina, Havre de Grace
410-939-2869
www.baysail.net

(Continued on page 17)

Triathlon continued

(Continued from page 16)



DE) on Sept. 28th.

Another way to enjoy the event would be to sit along the route the cyclists will be taking. See their website for complete details:

www.Piranha-sports.com/diamond.html

You can also check out the route that the runners will take as they follow the Susquehanna River in Perryville.

The host hotel is **Comfort Inn** at the I-95 and St. Rt. 222 interchange in Perryville (Exit 93). Athletes, friends and family will be arriving as early as Friday afternoon. From 3-8 p.m. participants will be picking up their packets at the Perryville Community Park. As you'll note in the calendar, that same evening, many will take part in the Ironbirds Game Bus Trip from Perryville.

Piranha Sports, LLC, a leading event production company, headquartered just outside of Wilmington, Delaware organizes this event. The company produces swimming, cycling and running events in Pennsylvania, New Jersey, Delaware and Maryland. For more information, visit <http://www.piranha-sports.com>.

Interested in participating? To win the Regional Championship, you only need to take part in a minimum of 4 of the 7 events. Check it out online. But here's a quick schedule.

Event 4 is a Cape May Diamond Biathlon at Sunset Beach, Cape May, NJ on August 23rd.

Event 5 is a Delaware Diamondman Triathlon at Lums Pond State Park in Bear, DE on Sept. 7th.

Event 6 is Lums Pond Triathlon and Duathlon (Bear,

Event 7 takes place at Cape Henlopen State Park in DE for the Cape Henlopen Triathlon and Duathlon on October 12th.

Come out and enjoy the fun. Let's make this a venue that brings visitors back to our area again and again.

Those of you who prefer a pleasant way to enjoy this event in Port Deposit might want to consider

having brunch at one of the fine restaurants or just a donut and coffee and sit on the sidewalk between 9 and 10:30 a.m. The cyclists will be working their way to the dam and pedaling through Port about that time. Encourage them on their way with a big cheer!

IMPORTANT NOTE:

Please keep your eye out for cyclists throughout the morning. Keep in mind that they are racing the clock. Check carefully before crossing the street and keep a very alert eye on children. Thanks so much. Let's keep this a fun event.



JAVA
By The Bay, inc.

Purveyors of Fine Coffees & Teas
by the Cup or by the Pound

Muffins • Bagels • Espresso Bar
Frozen Coffee & Tea Drinks
Soft Serve Frozen Yogurt
Custom Gift Baskets

118 N Washington St.
Havre de Grace, MD

410-939-0227
Shalonn & Charlie Lawson

Par Excellence Day Spa

Electrolysis, Facial, Nail & Total Body Care



OLD WORLD VICTORIAN DAY SPA

452 Congress Avenue
Havre de Grace, MD

410-272-1060 or
410-939-0029

Visit us at www.parexcellencedayspa.com

FACIALS
BODY MASSAGE
AROMA THERAPY BATH
ELECTROLYSIS
TOTAL NAIL CARE

Day Spa Packages
Customized For Your
Special Needs

Gift Certificates Available

Harford Hospice 4th Annual Regatta

An exciting event to benefit
Harford Hospice

We invite you to join WBAL Radio News personality Dave Durian at the Harford Hospice Regatta. Sing with "pyrates", enjoy great food and support a terrific cause! Meet Celebrity Guest, Vi Ripken. Landlubbers and sailors alike will spend an evening of fun and fabulous food to support Harford Hospice.

UPPER CHESAPEAKE ♥ ST. JOSEPH
H ♥ M ♥ E ♥ C ♥ A ♥ R ♥ E

Friday, May 30, 2003 • 6:30 p.m.

Historic Havre de Grace

For more information or to purchase tickets, contact
Upper Chesapeake Health Foundation at 443.643.3460
www.uchs.org

Be sure to
pick up our
partner-publication

For information on our
neighboring communities
Lockhouse To Lighthouse

www.lockhousetolighthouse.com

Darlington Independence Day Committee Plans 20th Celebration ...

by Ginny Dickie

You never know just what will happen to an idea – will it fizzle out or will it explode into something much bigger? In the case of the Darlington Peace Committee, a group that was active from approximately 1982 until 1986 or so, their idea to have a family picnic and fireworks to celebrate Independence Day in Darlington “exploded” into a full-blown celebration with a picnic, entertainment, parade, and fireworks.

The celebration this year – Sunday, June 29 – will be Darlington’s twentieth. Edna Reeves, Chairperson of the Darlington Independence Day Committee, says that this year will be special offering a more spectacular fireworks display, entertainment for children that includes a puppeteer, cloggers, and a country band. Special t-shirts will be sold to commemorate the event.

Edna Reeves has been involved in the workings of the committee for most of the past twenty years. She was active in the Darlington Peace Committee, which was the name of the original group to sponsor the celebration. The name of the committee for the celebration was changed, she says, because people didn’t quite understand what the Peace Committee was all about.

I recently met with several people who were on that original Peace Committee: Mara Walter, former Coordinator of the committee; Ginna Drahan Bennett; John Low; and Patricia Dearing-



Merry Jane from Merryland waves to the crowd at the Darlington Independence Day Parade and Celebration.

Members of other churches and organizations, along with area residents, formed a committee of about 10 to 15 active participants, with others who participated from time to time. They planned activities on a month-to-month basis, including pot-luck dinners, candle light vigils, campaigns to encourage voter registration, and presentations of their views to organizations.

The Peace Committee felt that a picnic was a way to celebrate a sense of community and to bring people together. Mara Walter says that, “It was sort of a way to market our position, to make people understand that we were not just against things, but in favor of families, community, and celebrations of our independence.”

The first celebration was a picnic in the relatively new Francis Silver Park on Shuresville Road. It was decided to hold it on the last Sunday in June in 1983. The third celebration in 1985 featured the landing of a huge hot air balloon with the word “Peace” in a big heart on the side. (Mara said “We tried to think of things that were eye-catchers, that would bring people.”) There was also an air show put on by Aldino Airport. Pony rides were held at least one year, but were discontinued because of insurance problems.

The committee went round and round on the issue of fireworks. Pat McDonald said, “We felt we would be using projectiles to celebrate a war (of Independence). We were pacifists celebrating a war!” Nevertheless, the committee did sponsor fireworks displays. “People were so excited about fireworks in Darlington, they just couldn’t comprehend,” Mara Walter added.

(Continued on page 18)

Spring Hours: Wed.-Sun. 11 am til ?

HOT STEAMED CRABS & VARIOUS SEAFOOD PRODUCTS

- Bushels of Crabs- Live or Steamed
- Shrimp- Raw & Steamed
- Fresh Crabmeat Daily
- Fresh Soft Shell Crabs



- Homemade Daily:
- Cream of Crab Soup
 - Vegetable Crab Soup
 - Crabcakes Platters
 - Jumbo Shrimp Salad

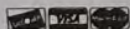
Retail Carry-Out Only

THE SEAFOOD DEALER

921 Pulaski Hwy., Rte. 40 • Havre de Grace, MD

410-939-5625

CARRY OUT • NEXT TO BAYOU RESTAURANT
INDEPENDENCE CARD ACCEPTED!



McDonald. I wanted to find out what the mission of the Peace Committee was and how they came to organize an Independence Day celebration.

Although everyone admitted that after twenty years, their memories are a little rusty, they all felt that the original mission of the group was to strive toward a nuclear free zone, to stand against nuclear weapons, and to promote peace. The core members were from the Darlington Friends Meeting, but Pat McDonald remembers that they met with ministers from several churches to encourage interest.

TERRACE GARDEN APARTMENTS



BUSINESS Office
410-939-5570
FAX - 410-939-4224

706 Pulaski Highway; Havre de Grace, MD
Cecil E Hill, Owner

BC Real Estate Specialists

100 St. John Street • Havre de Grace, MD 21078

410-939-5055 • (Fax) 410-939-2974

CHARLIE HINER

(H) 410-939-9928 • (C) 410-937-8585

Email: charlehiner@mris.com

“Your Home Town Realtor”

“Give Charlie Hiner a call today for all your real estate needs”

“The Old Ordinary” Circa 1814



Life's great at

Havre de Grace

929 Pulaski Hwy. • Havre de Grace, MD 21078
410-939-1880

For toll-free reservations 1-800-800-8000



You're Eight Times Smarter Staying Here.

1. Complimentary Wake-Up Calls.
2. Complimentary Coffee & Toast Bar
3. Remote Control Cable TV with ESPN, HBO & CNN
4. Refrigerators, Recliners & Microwaves in Some Units
5. TDD & Close Caption TV Available
6. Free Local Calls
7. Non-Smoking Rooms
8. King Size Beds

www.super8.com

... Began as Peace March

... Ends in Celebration

(Continued from page 18)

John Low remembers people bringing their own meal to the park. He also remembers going around during the picnic with a plastic bucket decorated with a green Darlington Peace Committee bumper sticker to collect money to pay for the fireworks. In addition to selling bumper stickers, Ginna Drahan Bennett also recalls selling T-shirts that advertised the Darlington Peace Committee. The money received was enough to pay for the fireworks, relatively cheap twenty years ago.

The entertainment was pretty cheap, too. Members of the local community who provided entertainment at no expense included Rob Dare, Janet Lloyd, and Gary and Bev Browning.

When it came to the parade, again the committee debated about having a military band, but decided to allow the Aberdeen Proving Ground Band. It was mostly a "come as you are" kind of parade - Boy Scouts, Girl Scouts, 4H, bicycles, tractors, trucks, and horses. Edna Reeves remembers the parade lasting about five minutes, and the fireworks lasting about five minutes!

Approximately one hundred fifty people attended the first celebration. It was very local and was never publicized as a county event. Compare that to the nearly 5,000 that Edna Reeves estimates attended in

2002. She says more are expected this year. Now, say the original Peace Committee members, the Darlington schedule is up there with Havre de Grace and Bel Air.

As the fireworks, bands, and entertainment became more expensive, the Peace Committee felt it was "getting a little shaky" whether there would be enough money. Besides, the Peace Committee was active only about three years or so, after which members of the community not on the Peace Committee stepped up and helped with the planning so that the celebration would continue. That's when the name of the committee changed although some of the Peace Committee members stayed on. Now as members drop off, others join. For a committee of about eight members, it's a big undertaking.

When asked what she thought of the celebration today, Mara Walter said, "Oh, I think it's wonderful. But it probably doesn't have the same tone as it did then."

I wanted to know if they felt that the Peace Committee had achieved what they had hoped it would. Mara Walter commented, "At the time, it made other people who lived in Darlington think about war, about stock piling, about the danger of nuclear weapons. Did other people join us? No, but they supported us."

Some of the members are still active in the peace effort through the Friends Meeting, via the Internet, and by hosting peace walkers on their routes. Ginna Bennett has participated in several peace organizations since the breakup of the Darlington Peace Committee, and her two daughters have been involved in peace efforts.

As to the efforts of the Darlington Peace Committee in the Independence Day Celebration, it's probably safe to say it is a wonderful success and hopefully will continue for many years!

Be sure to check the CALENDAR of EVENTS for the details on this celebration to be held Sunday, June 29th!

The Wilson Community Center, located at 1024 Main Street in Darlington, is a three story Victorian house that was completely remodeled for public use as a result of a bequest from Ms. Dorothy Wilson to Grace Memorial Episcopal Church. Since it opened its doors to the public in September of 1993, programming has grown to include both a before and after school program, summer camp, and a host of other programs for children. Adult programming includes exercise classes, quilting classes, T.O.P.S. weight loss, and GED testing in cooperation with Harford Community College. The Center is also available for meeting space. For more information please call Marthea Blevitt at 410-836-3555.

Irwin R. Scarff, Sr.

"Committed To Making Things Happen"

Multi-Caring Agents For All Your Real Estate Needs

Residential & Commercial Properties
Government Foreclosures - Little or No Money Down

To view all available properties visit our website on
www.scarff.biz



Irwin R. Scarff
443-465-0122



Al Boehley
443-286-2726



Susan Ziemann
443-286-0712



Catherine D. Miele
410-294-6400

LONG & FOSTER REALTORS®

443-465-0122

FREE HMS HOME WARRANTY OR HOME INSPECTION WITH THIS AD

Historic Port Deposit, Maryland, on the shores of the beautiful Susquehanna River.... a great place to live, work and visit!



*Paul Risk Associates' Port Deposit Office,
housed in the national award-winning historical restoration of a bank building on South Main Street
in the heart of Port Deposit's Historic District*

Design/Build · General Contractor · Construction Management

Partner with us!



11 West State Street • Quarryville, PA 17566 • 717-786-7308
6 South Main Street • Port Deposit, MD 21904 • 410-378-3333

www.paulrisk.com

PORTSIDE

GRILLE



DOCKSIDE DINING takes on a new attitude when you're savoring a fine meal while filling your senses with nature's glory on the Susquehanna River

ENJOY FRESH, ORIGINAL & UNIQUE meals in our friendly atmosphere. Choose from such delights as Grilled Salmon Club with Horseradish Dill Mayonnaise or Pecan-Crusted Rockfish with Lemon Beurre Blanc. Maybe you'd prefer our fresh cuts of Angus Beef such as Filet Mignon and NY Strip. Or try our Barbecued Bacon-wrapped Shrimp. Baby-back Ribs or traditional Maryland Lump Crab Cakes.



WHETHER CELEBRATING YOUR SPECIAL EVENT, a holiday or just enjoying a great meal with friends, we invite you to join us at PortSide Grille in historic Port Deposit on the Susquehanna River.

**TO MAKE RESERVATIONS, BOOK A
BANQUET OR REQUEST INFORMATION**

CALL

**410-378-4600
800-719-9981**

Photos by Chef Mike Kuester